

Configurazione Cisco SPA122

Modello: **Cisco SPA122**

Per poter accedere all'interfaccia web del suo SPA122 deve connettere l'apparato al router con server DHCP abilitato (di solito lo è da impostazioni di fabbrica) e successivamente per sapere l'IP assegnato deve collegare alla porta marcata "PHONE 1" un normale telefono analogico e digitare il seguente codice:

****110#

(quattro volte asterisco - 110 - cancelletto)

Dopo aver digitato il codice, dal telefono verrà dettato l'indirizzo IP in lingua inglese. Esempio:
192.168.XXX.XXX (dove XXX sono numeri variabili assegnati in base alla sua rete locale)

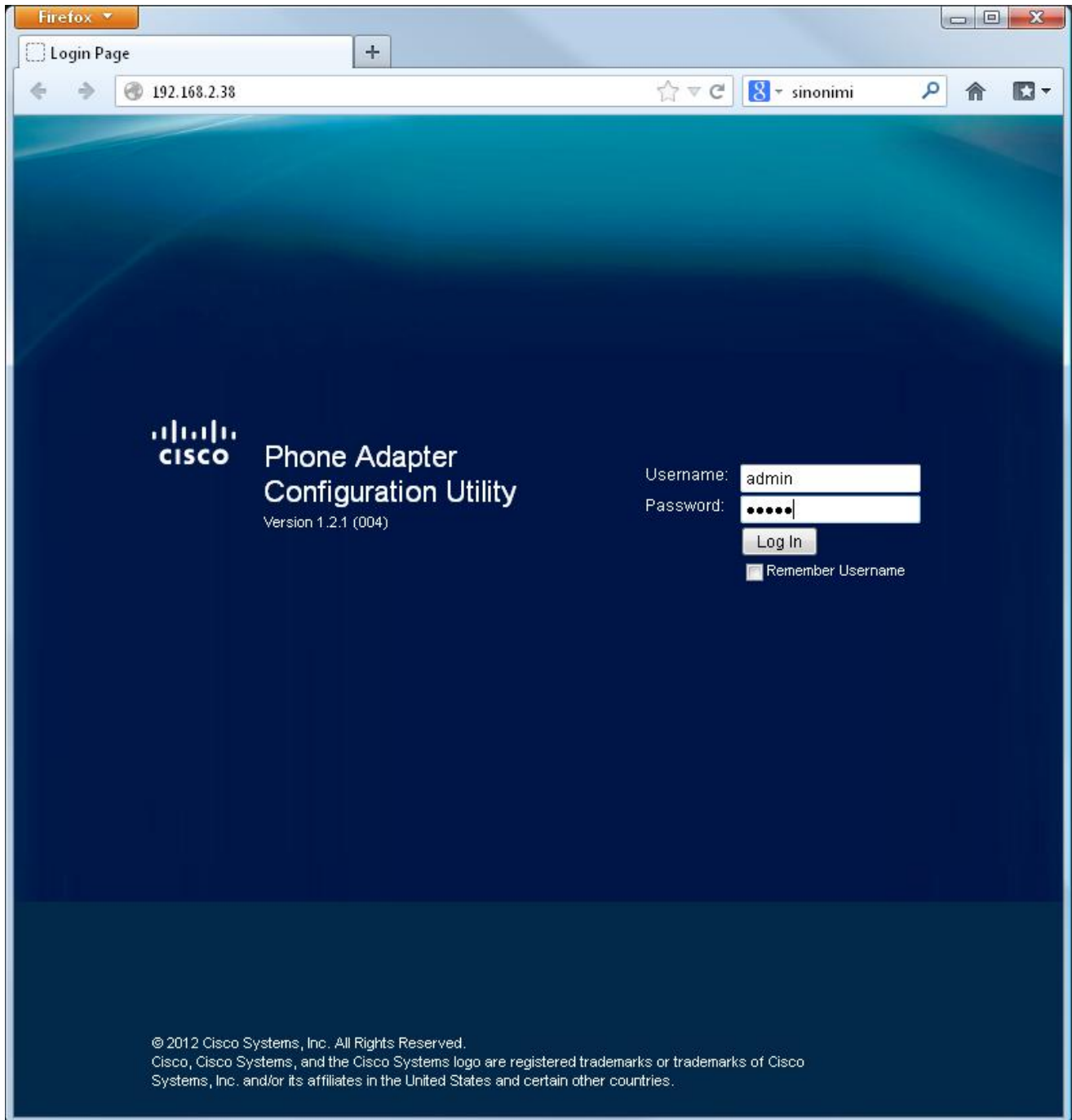
A questo punto basta digitare sul suo browser nella barra in alto degli indirizzi web:
<http://192.168.XXX.XXX>

Nella pagina che appare inserire:

Username: admin

Password: admin

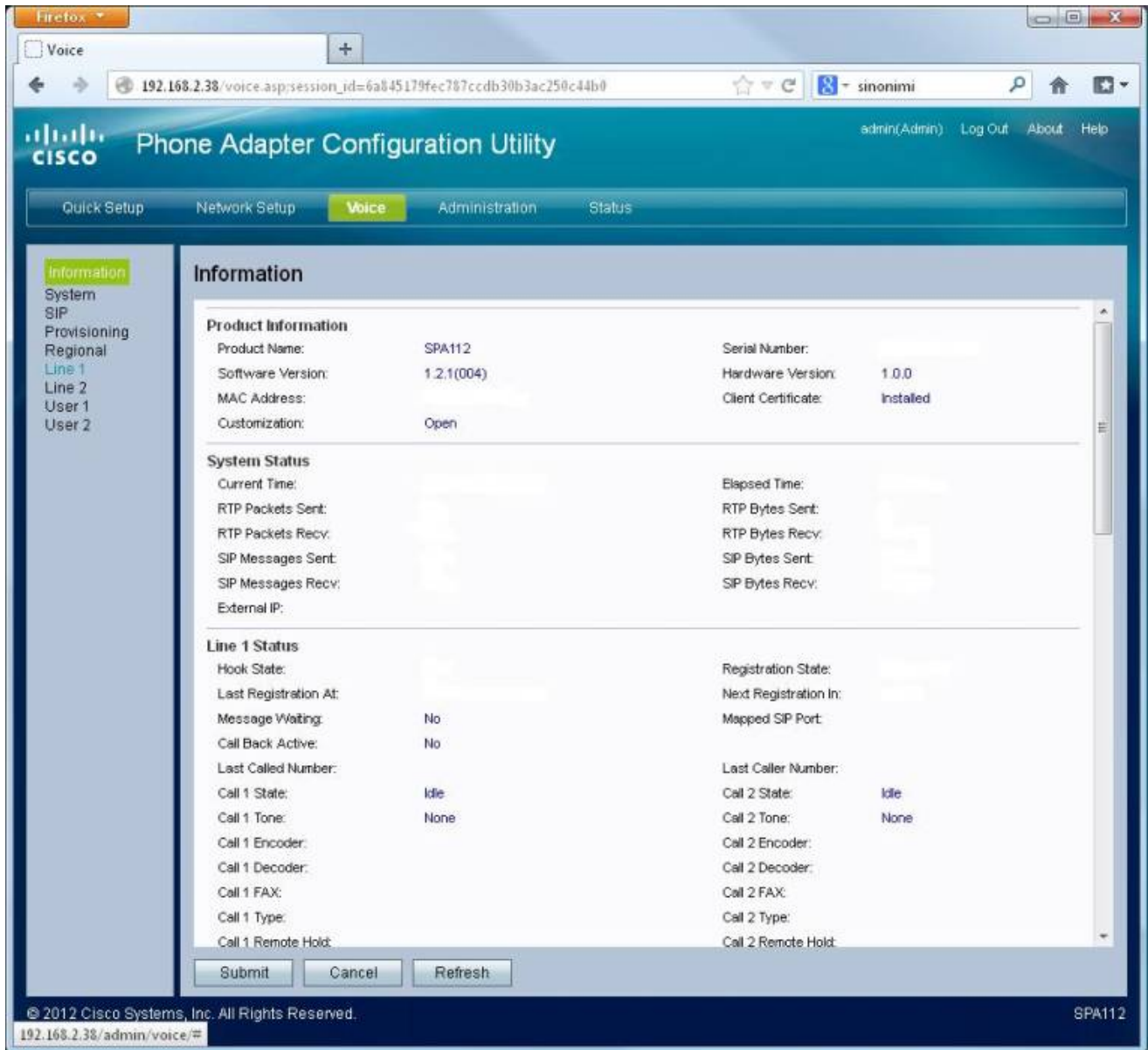
poi cliccare "Log In"



nella pagina successiva cliccare in alto su "Voice"

The screenshot shows a web browser window with the address bar displaying `192.168.2.38/quicksetup.asp;session_id=6a845179fec787ccdb30b3ac25f`. The page title is "Phone Adapter Configuration Utility" and the user is logged in as "admin(Admin)". The navigation menu includes "Quick Setup", "Network Setup", "Voice", "Administration", and "Status". The "Quick Setup" section is active, showing configuration options for "Line 1" and "Line 2". Each line has fields for Proxy, Display Name, Password, User ID, and Dial Plan. The Dial Plan field contains the text `(*xx[[3469]11|0]00[[2-9]xxxxxx]1xxx[2-9]xxxxxS0)xxxxxxxxxxxxx.)`. At the bottom of the page, there are "Submit", "Cancel", and "Refresh" buttons. The footer contains the copyright notice "© 2012 Cisco Systems, Inc. All Rights Reserved." and the identifier "SPA112".

sul menu a sinistra della nuova pagina cliccare su "Line 1"



Nella nuova pagina inserire i dati come indicato nelle immagini seguenti, senza modificare gli altri parametri.

Sezione "Proxy and Registration"

Proxy: sip.cheapnet.it

Proxy and Registration	
Proxy:	<input type="text" value="sip.cheapnet.it"/>
Outbound Proxy:	<input type="text"/>
Use Outbound Proxy:	<input type="text" value="no"/>
Register:	<input type="text" value="yes"/>
Register Expires:	<input type="text" value="3600"/>
Use DNS SRV:	<input type="text" value="no"/>
Proxy Fallback Intvl:	<input type="text" value="3600"/>
Mailbox Subscribe URL:	<input type="text"/>
Use OB Proxy In Dialog:	<input type="text" value="yes"/>
Make Call Without Reg:	<input type="text" value="no"/>
Ans Call Without Reg:	<input type="text" value="no"/>
DNS SRV Auto Prefix:	<input type="text" value="no"/>
Proxy Redundancy Method:	<input type="text" value="Normal"/>
Mailbox Subscribe Expires:	<input type="text" value="2147483647"/>

Sezione "Subscriber Information"

Display Name: Cheapnet (o un nome a piacere)

Password: la password del suo account VOIP che si trova nell'area utenti Servizi attivi -> CheapVoIP

Auth ID: Il suo username VOIP esempio 65544XXXXX

User ID: Il suo username VOIP esempio 65544XXXXX

Use Auth ID: yes

Subscriber Information			
Display Name:	<input type="text" value="65544XXXXX"/>	User ID:	<input type="text" value="65544XXXXX"/>
Password:	<input type="text" value="abc123"/>	Use Auth ID:	<input type="text" value="yes"/>
Auth ID:	<input type="text" value="65544XXXXX"/>	Resident Online Number:	<input type="text"/>
SIP URI:	<input type="text"/>		

Sezione "Audio Configuration"

- Preferred Codec: G711a
- FAX CNG Detect Enable: yes
- FAX Codec Symmetric: yes
- FAX Passthru Method: RelINVITE
- FAX Process NSE: yes
- FAX T38 ECM Enable: yes
- Silence Supp Enable: no
- Echo Canc Enable: no
- FAX Passthru Codec: G711a
- FAX Enable T38: yes
- FAX T38 Redundancy: 3
- FAX Tone Detect Mode: caller or collee
- FAX T38 Return to Voice: no

Audio Configuration			
Preferred Codec:	<input type="text" value="G711a"/>	Second Preferred Codec:	<input type="text" value="Unspecified"/>
Third Preferred Codec:	<input type="text" value="Unspecified"/>	Use Pref Codec Only:	<input type="text" value="yes"/>
Use Remote Pref Codec:	<input type="text" value="no"/>	Codec Negotiation:	<input type="text" value="Default"/>
G729a Enable:	<input type="text" value="yes"/>	Silence Supp Enable:	<input type="text" value="no"/>
G726-32 Enable:	<input type="text" value="yes"/>	Silence Threshold:	<input type="text" value="medium"/>
FAX V21 Detect Enable:	<input type="text" value="yes"/>	Echo Canc Enable:	<input type="text" value="no"/>
FAX CNG Detect Enable:	<input type="text" value="yes"/>	FAX Passthru Codec:	<input type="text" value="G711a"/>
FAX Codec Symmetric:	<input type="text" value="yes"/>	DTMF Process INFO:	<input type="text" value="yes"/>
FAX Passthru Method:	<input type="text" value="RelINVITE"/>	DTMF Process AVT:	<input type="text" value="yes"/>
FAX Process NSE:	<input type="text" value="yes"/>	DTMF Tx Method:	<input type="text" value="Auto"/>
FAX Disable ECAN:	<input type="text" value="no"/>	DTMF Tx Mode:	<input type="text" value="Strict"/>
DTMF Tx Strict Hold Off Time:	<input type="text" value="70"/>	FAX Enable T38:	<input type="text" value="yes"/>
Hook Flash Tx Method:	<input type="text" value="None"/>	FAX T38 Redundancy:	<input type="text" value="3"/>
FAX T38 ECM Enable:	<input type="text" value="yes"/>	FAX Tone Detect Mode:	<input type="text" value="caller or callee"/>
Symmetric RTP:	<input type="text" value="no"/>	FAX T38 Return to Voice:	<input type="text" value="no"/>

Per concludere, cliccare su "Submit"

Nel caso in cui si desideri anche la regionalizzazione dei toni a quelli italiani, nel menu in alto VOICE cliccare a sinistra su REGIONAL e fare copia-incolla di tutte le righe di comando che seguono:

Dial Tone: 425@-12;10(.2/.2/1,.6/1/1)
Second Dial Tone: 425@-12;10(.2/.2/1,.6/1/1)
Outside Dial Tone: 420@-16;10(*0/1)
Prompt Tone: 425@-12;10(*0/1)
Busy Tone: 425@-20;10(.5/.5/1)
Reorder Tone: 425@-20;10(.5/.5/1)
Off Hook Warning Tone: 425@-25;30(.2/.2/1)
Ring Back Tone: 425@-20;*(1/4/1)
Confirm Tone: 425@-16;30(.4/.1/1,.25/.1/1,.15/3/1)
SIT1 Tone: 985@-16,1428@-16,1777@-16;20(.380/0/1,.380/0/2,.380/0/3,0/4/0)
SIT2 Tone: 914@-16,1371@-16,1777@-16;20(.274/0/1,.274/0/2,.380/0/3,0/4/0)
SIT3 Tone: 914@-16,1371@-16,1777@-16;20(.380/0/1,.380/0/2,.380/0/3,0/4/0)
SIT4 Tone: 985@-16,1371@-16,1777@-16;20(.380/0/1,.274/0/2,.380/0/3,0/4/0)
MWI Dial Tone: 425@-16;30(.2/.2/1)
Cfwd Dial Tone: 425@-20;20(.5/.5/1)
Holding Tone: 600@-19;*(.1/.1/1,.1/.1/1,.1/9.5/1)
Conference Tone: 425@-16;30(.4/.1/1,.25/.1/1,.15/5/1)
Secure Call Indication Tone: 397@-19,507@-19;15(0/2/0,.2/.1/1,.1/2.1/2)
Ring1 Cadence: 60(1/4)
CWT1 Cadence 30(.4/.1,.25/.1,.15/5)
